

Worlebury Residents' Association

Spring Fair



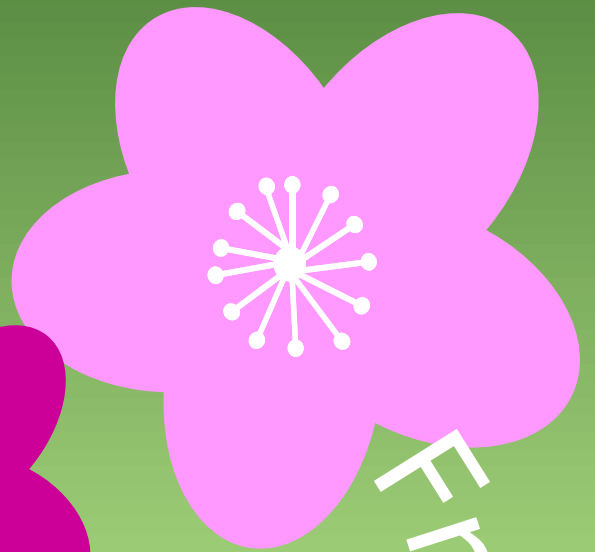
stalls



cakes



refreshments



Free entry

10am-noon

Saturday 14th May



Worlebury School , Woodspring Avenue



Spring 2011

Newsletter

Worlebury Residents' Association

Spring Fair

The snow has long melted and the daffodils are out in the woods, so it must be time for WRA Annual Spring Fair. There will be a great selection of stalls selling plants, cards, craft goods and jams, and we hope to have one of our councillors available to answer any questions you might have.

Come along, to have a tea or coffee and to sample some of the delicious cakes on sale, and to meet some more of your neighbours.

The fair will take place at Worlebury School on Saturday the 14th May.

Given that we have experienced one of the worst winters on record and the travel problems that ensued, it came to our

attention that there may be a number of senior Worlebury residents who felt isolated and unable to get out of their homes. There also may be residents who feel vulnerable and would just like to hear a friendly voice on the telephone.

With this in mind we have detailed a number of contacts who would be able to assist and offer help. This could be help at home, help with shopping or advice on social gatherings in the area.

Listed below are a number of organisations who would be of assistance.

Care Connect Tel: 01275 888801

Care Connect is the North Somerset Council's first point of contact for all social care enquiries. It offers impartial advice on social care issues.

Age U.K.-Somerset . Tel: 0800 716 543

Age UK Somerset works with and for older people in Somerset and North Somerset. Age UK aim to promote the well-being of all older people, and to help make later life a fulfilling and enjoyable experience. They are independent and autonomous. All the money raised is spent within the county and many of the services are free and operate throughout the county.



Contact the Elderly. Tel: 0845 643 4709

Contact the Elderly is a national charity who organises monthly Sunday afternoon tea parties for people over 75 who live alone with little or no support from family and friends.

One Sunday afternoon a month volunteers use their cars to take older members to and from a volunteer host's home for tea, cake and companionship. Our hosts take it in turn to welcome the small group of older people and volunteer drivers into their home for a few hours.

These Sunday afternoon tea parties are a lifeline of friendship bringing older people and volunteers together for an afternoon of stories, laughter and conversation.

We are planning for representatives to attend future meetings and to give a short talk on available services.

"No Cold Calling Zone" on Worlebury?

"Cold Calling ban in village zone" (Uphill) and "Village sets up no cold calling zone" (Shipham). These were some headlines in the Weston Mercury in January and February. The Worlebury Neighbourhood Watch committee are thinking about trying to organise such a zone in Worlebury.

(Continued from page 4)

These zones are set up in areas where residents want to deter unexpected salesmen from knocking on their doors. It gives the householder the power to state that the caller is in a No Cold Calling zone and that they do not want anything to do with them. The householder can then phone the police who will pursue the report. The police are anxious to prevent distraction burglaries where one person keeps the householder talking at the front door whilst another goes round the back and steals from the property, or they are just sussing out the property for a later burglary. Seemingly, this is often the way burglaries are planned.

This scheme has been launched by the police in partnership with other organisations including North Somerset Council, Trading Standards and the Safer Homes Partnership. Residents are given door stickers and advice about how to deal with unwanted callers.

This scheme was outlined at our recent Neighbourhood Watch Social evening, and on a show of hands, those present were unanimously in favour. This is still in the early stages. We will know more after our next co-ordinators' meeting on 26 May, but if you have any views on Worlebury becoming a "No Cold Calling Zone" you can contact your local co-ordinator or



(Continued from page 5)

Jane Sands (Chairman, Worlebury Neighbourhood Watch) on 413053. Vivien Adlam

More information on No Cold Calling Zones is available from North Somerset Council's Trading Standards web site <http://www.tradingstandards.gov.uk/northsomerset/link16.htm>.

Books for Burma

A couple of our members are involved in collecting books suitable for children to send to schools in Burma. Recently we collected locally over 200 educational and story books and magazines and these will be included in a consignment that the Britain/ Burma Society is delivering to a school of 7000 pupils in Mandalay and to new schools it is setting up.

There is still an almost insatiable demand for books from children eager for, but starved of, a reasonable education and if you have any books you think suitable please telephone Denis on 419014

Any other surplus books in reasonable condition would be gratefully received for sale at the Annual Art Exhibition and Book Sale on the 27 to 30 May (at The United Reform Church, The Boulevard) where the proceeds from the books will be divided between Christian Aid and Amnesty.

Worlebury St. Paul's Primary School

As you may know, Worlebury School has been granted Primary school status and has been altering and extending its buildings to accommodate the future intake. This has been an exciting time of change for children and staff there. They have recently unveiled their beautiful 'new hall' which we were able to use for our AGM in February. The children of years 3 and 4 have just put on a very impressive performance of the musical "Joseph and His Amazing Technicolour Dreamcoat" and there are many delights to follow I am sure.

Fundraising: The children have thrown themselves into the idea of school fundraising which has resulted in some ingenious ideas. Many of these have been within the school but it is worth keeping an eye out for cake sales and the like (yum!)

Sue Ulllyott is hoping to put on an entertainment event at the school on Saturday 2nd July in the afternoon to raise funds. Watch out for posters closer to the date.

Worlebury St. Pauls Primary School Toddlers Group

The toddlers group runs every Thursday in term time 10-11.30am. There is play dough, crafts, toys and refreshments. It costs just £1 per family. It starts back after Easter on the 28th April, but will not run on the 5th May due to the election.



Summer Event??

At the recent AGM we spoke of the low attendance at the Christmas Party and suggestions were made that residents may prefer a summer event instead. It may be difficult for us to arrange an event for this year, but would like to hold an event to celebrate the Golden Jubilee next year. Holding an event can be difficult to organise, we need to know which age range will attend, will it be day or evening, inside or outside, will we need to cater, do we need a bar, will we need insurance, and the biggest obstacle good old 'health and safety'!!

Venues we have locally are Kewstoke Hall, Worlebury School and Worlebury Golf Club. However, the school does not have a bar, and the golf club does not admit children. It may be nice to hold a good old fashioned street party, maybe in Worlebury Park Road, which would be fairly central or maybe a resident has a large garden and is willing to allow us to use for an event.

In order to establish what residents would prefer, could you take a few minutes to complete the following questions and either pop them through Sheila's door (50 Cliff Road), give to a committee member or give Sheila a ring on 429299. Many thanks

Please delete as appropriate:-

Event?	When?	How Many of you?
BBQ type event for adults only	Evening/midweek/ weekend	Nos.....A.....C
Dance and Buffet adults only.	Evening/midweek/ weekend	Nos.....A.....C
Street Party for all Family.	Midweek/Saturday/ Sunday	Nos.....A.....C
BBQ event for all Family	Midweek/Saturday/ Sunday	Nos.....A.....C

Are you willing to help with event? Yes/No Are you willing to host event? Yes/No

Comments/Suggestions

.....

.....

.....

.....

Name..... Tel

Address.....



1940's night Dinner Dance

A 40's night Dinner Dance is being held at the Worlebury Golf Club on Friday May 13th. 7-11pm. Black tie and formal dress. Tickets at £17.50 include a full course waitress service meal, and music of the era. The menu is posted on the Golf Club notice board.

Big Band Repertoire includes several Glenn Miller numbers, In the Mood, Pennsylvania 65000, American Patrol for example. Rat Pack and some later big band numbers also included. Also some modern disco pops and ballads to dance to. A similar evening was held in January, a great success with 92 people attending.

The Band features Hammond Organ, with big band drummer, and a well known big band leader from the Midlands playing tenor and alto saxes. It should be a good night for discerning music lovers. Meet your Worlebury friends there and enjoy yourselves.

Reservations and further information from Tony Trout phone 629495

The Unexpected

You never know what you have found,
On Worlebury Hill or just around,
In the trees or on the ground;
A blow-up snowman, a tiny shrew,
A green-bag harvest or "Doggy Do"! *

Your neighbours too, of various kind,
Might surprise you, in your mind,
Whether you perceive their role
As Sweet Celebrity or Grisly Prole!

One evening last October
I'll tell you what we found:—
The glade so full of children
You could not turn around!

Lanterns, candles, lots of noise,
Mothers, Fathers, girls and boys,
Hedgehog Lady and Owl Man
came,
Marshmallows toasted in the flame.

Doggie & I were quite spell-bound!

We scarcely could believe the sound.

As night came o'er and rain drops fell

They all coached home, the tale to tell.

I must admit my heart was touched

To see our Glade so teeming live,

Nor we, nor Rangers, knew of it,
It caught my throat and wet my eye!

I crept back later, torch now in hand,

To check the embers glowed no more,

and that our Owl was back on stand,

his eyes now closed, just occasional snore.....

.
. **Jackie Early**

* This is what we don't want to find please!

Why not pin this diary to your noticeboard or fridge?



Diary of Events 2011

- 28th April 10am Worlebury St. Paul's Toddler Group starts up again
- 13th May 7-11pm 40's Dinner Dance at Worlebury Golf
- 14th May 10.00 am WRA Spring Fair at Worlebury School
- 11th June 2-4pm St Pauls Summer Fair at Kewstoke Village Hall
- 2nd July Afternoon Entertainment Event at Worlebury School
- 15th October 7pm WRA Barn Dance at Kewstoke Village Hall
- 12th November 10am St Pauls Crafts for Christmas at Kewstoke Village Hall
- 19th November 10am WRA Christmas Fair at Worlebury School

We're on the web
www.worlebury.org.uk

Email:wra@worlebury.org

Tel No: 077 65 189 601

Worlebury Residents' Association